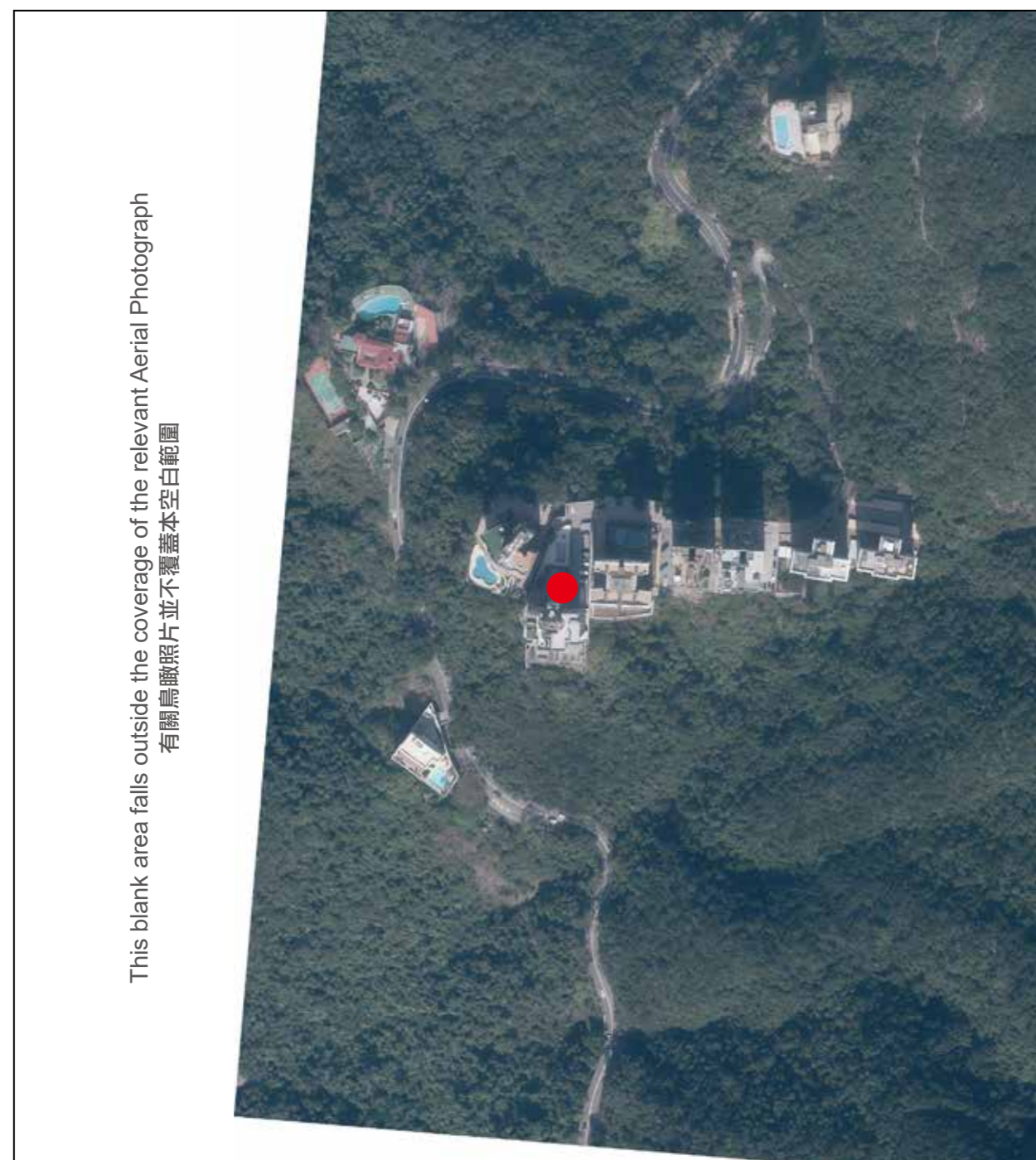


AERIAL PHOTOGRAPH OF THE DEVELOPMENT

發展項目的鳥瞰照片



Adopted from part of the aerial photograph taken by the Survey and Mapping Office of Lands Department at a flying height of 6,900 feet, Photo No. E145866C dated 11 January 2022.

摘錄自地政總署測繪處於2022年1月11日在6,900呎的飛行高度拍攝之鳥瞰照片，照片編號E145866C。

Notes:

The aerial photograph may show more than the area required under the Residential Properties (First-hand Sales) Ordinance due to the technical reason that the boundary of the Development is irregular.

附註：

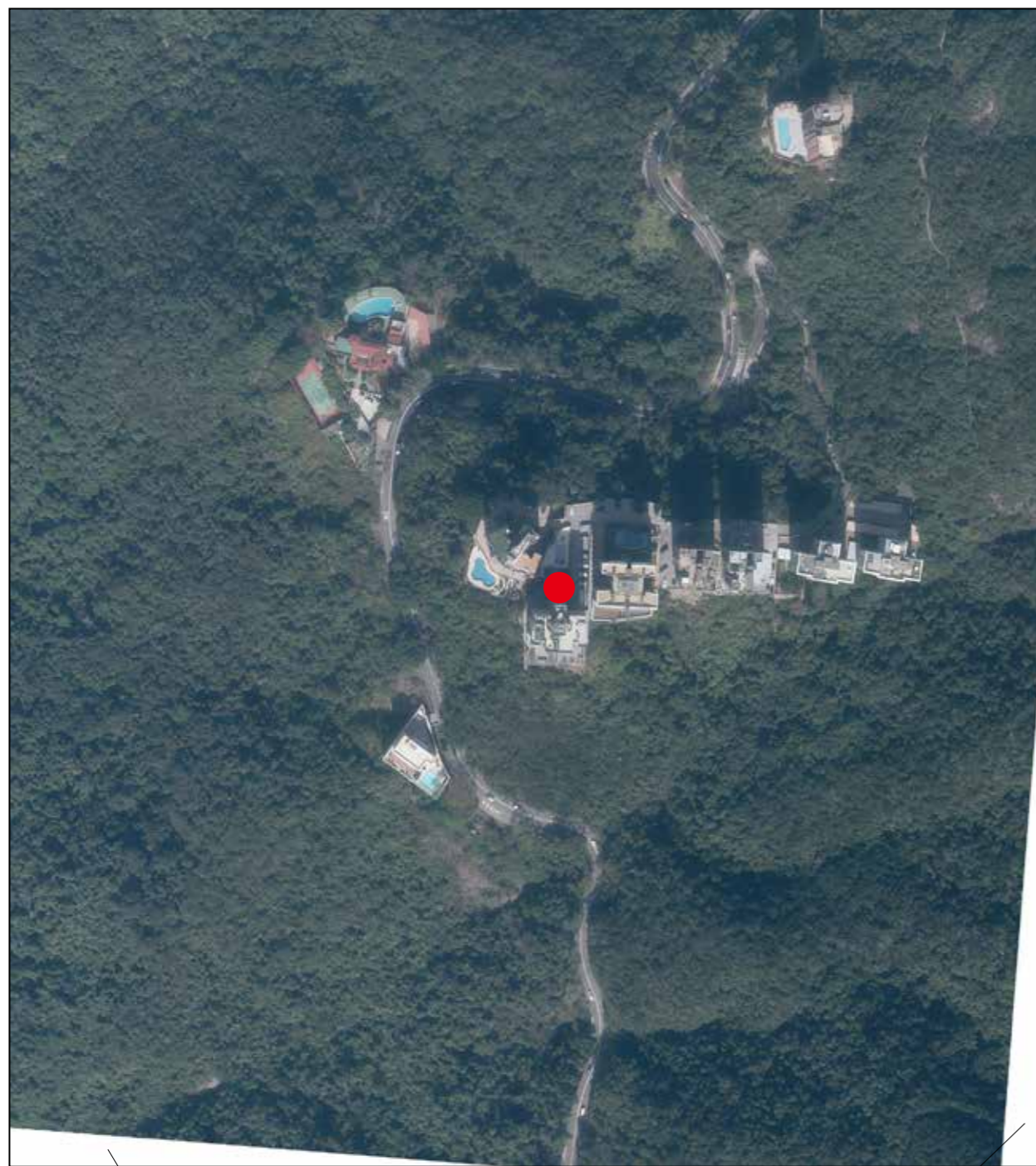
由於發展項目的邊界不規則的技術原因，此鳥瞰照片所顯示的範圍可能超過《一手住宅物業銷售條例》所規定的範圍。

Survey and Mapping Office, Lands Department, The Government of HKSAR
Copyright reserved - reproduction by permission only.

香港特別行政區政府地政總署測繪處版權所有 未經許可 不得複製。

● Location of the Development
發展項目的位置

AERIAL PHOTOGRAPH OF THE DEVELOPMENT 發展項目的鳥瞰照片



This blank area falls outside the coverage of the relevant Aerial Photograph
有關鳥瞰照片並不覆蓋本空白範圍

Adopted from part of the aerial photograph taken by the Survey and Mapping Office of Lands Department at a flying height of 6,900 feet, Photo No. E145867C dated 11 January 2022.

摘錄自地政總署測繪處於2022年1月11日在6,900呎的飛行高度拍攝之鳥瞰照片，照片編號E145867C。

Notes:

The aerial photograph may show more than the area required under the Residential Properties (First-hand Sales) Ordinance due to the technical reason that the boundary of the Development is irregular.

附註：

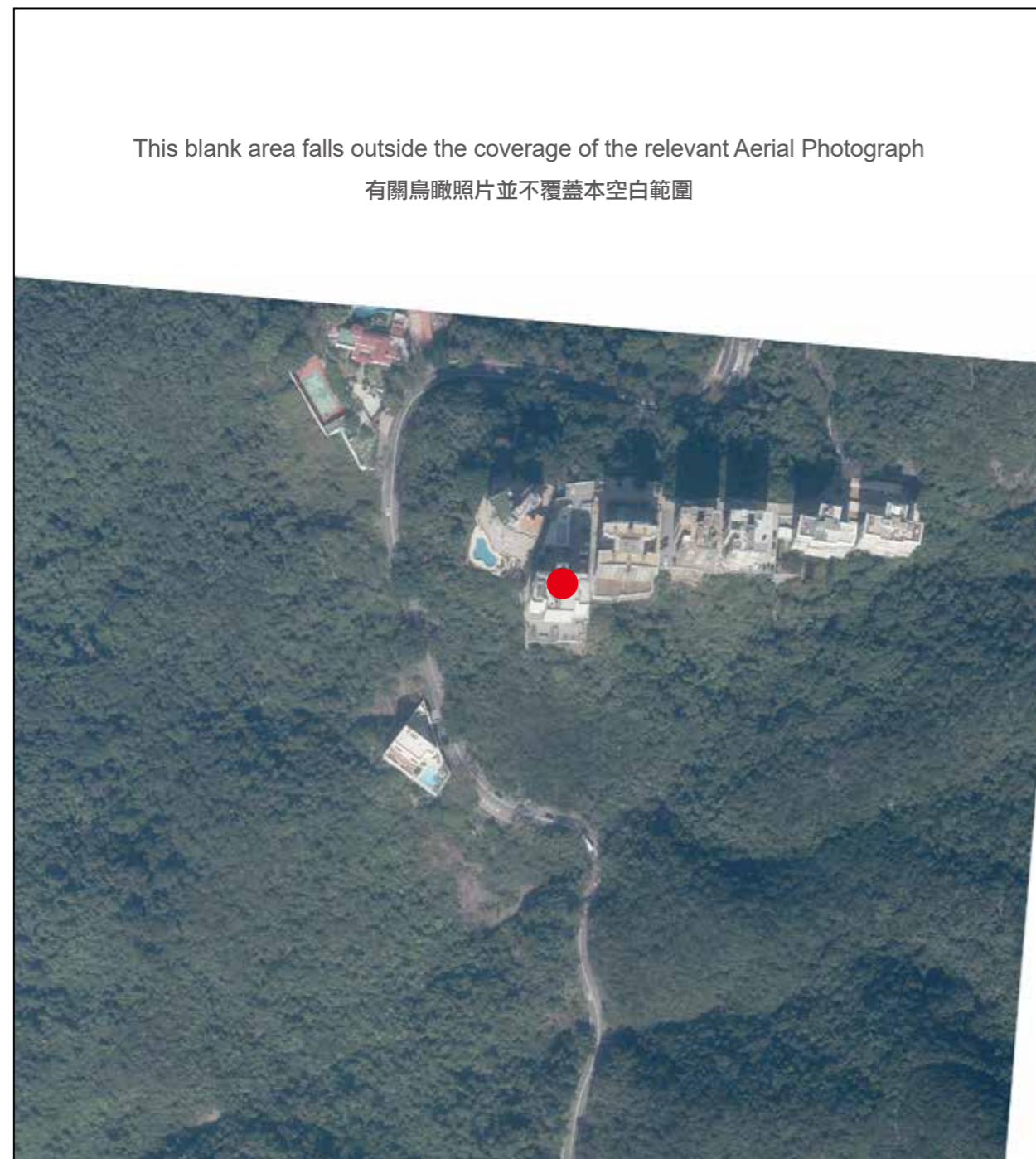
由於發展項目的邊界不規則的技術原因，此鳥瞰照片所顯示的範圍可能超過《一手住宅物業銷售條例》所規定的範圍。

Survey and Mapping Office, Lands Department, The Government of HKSAR
Copyright reserved - reproduction by permission only.

香港特別行政區政府地政總署測繪處版權所有 未經許可 不得複製。

● Location of the Development
發展項目的位置

AERIAL PHOTOGRAPH OF THE DEVELOPMENT 發展項目的鳥瞰照片



Adopted from part of the aerial photograph taken by the Survey and Mapping Office of Lands Department at a flying height of 6,900 feet, Photo No. E146038C dated 11 January 2022.

摘錄自地政總署測繪處於2022年1月11日在6,900呎的飛行高度拍攝之鳥瞰照片，照片編號E146038C。

Notes:

The aerial photograph may show more than the area required under the Residential Properties (First-hand Sales) Ordinance due to the technical reason that the boundary of the Development is irregular.

附註：

由於發展項目的邊界不規則的技術原因，此鳥瞰照片所顯示的範圍可能超過《一手住宅物業銷售條例》所規定的範圍。

Survey and Mapping Office, Lands Department, The Government of HKSAR
Copyright reserved - reproduction by permission only.

香港特別行政區政府地政總署測繪處版權所有 未經許可 不得複製。

● Location of the Development
發展項目的位置